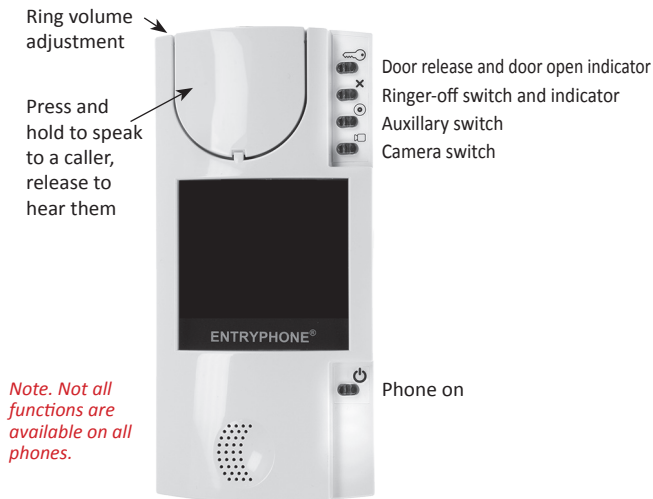


# Entryphone® 53#PTSP Operating Instructions



The Entryphone 53#PTSP is a wall-mounted, colour video, loudspeaking telephone. There is the large speech operation button on the top and smaller function buttons and indicator lamps along the right hand side of the unit.

**Automatic operation:** The video screen turns on automatically when the unit is called. If you wish to speak to the caller, **press and hold** down the speech button and **then release the button to hear their reply**. The speech circuits do not turn on until the speech button has been pressed once.

If you wish to admit a visitor, press the door release button on the upper right of the unit. Note: the release button will only operate when the screen is on.

The unit will turn itself off either a short time after the door has been released or after about ninety seconds of operation.

The **function switches (if fitted)**.

**Door release button and indicator:** If you wish to admit a visitor, press the door release button on the upper right of the unit. Note: The release button will only operate when the screen is on. If the lock release is fitted with a monitor switch the release button will illuminate to indicate that the door is open.

**Ringer off switch and indicator:** Press the ringer-off switch to mute the ringer; the button will illuminate to indicate the ringer is muted, press again to cancel.

**Camera Switch:** If your system has a second camera fitted press this to switch between cameras or lock the view to one camera.

**Phone on and power indicator:** If the phone has not been called you can use this button to turn the phone on, the indicator will illuminate. The unit will turn itself off either a short time after the door has been released or after about ninety seconds of operation.

**Ring Volume:** On the top left of the telephone there is a ring volume adjustment that can be turned using a small screwdriver. Turn clock-wise to increase the volume.