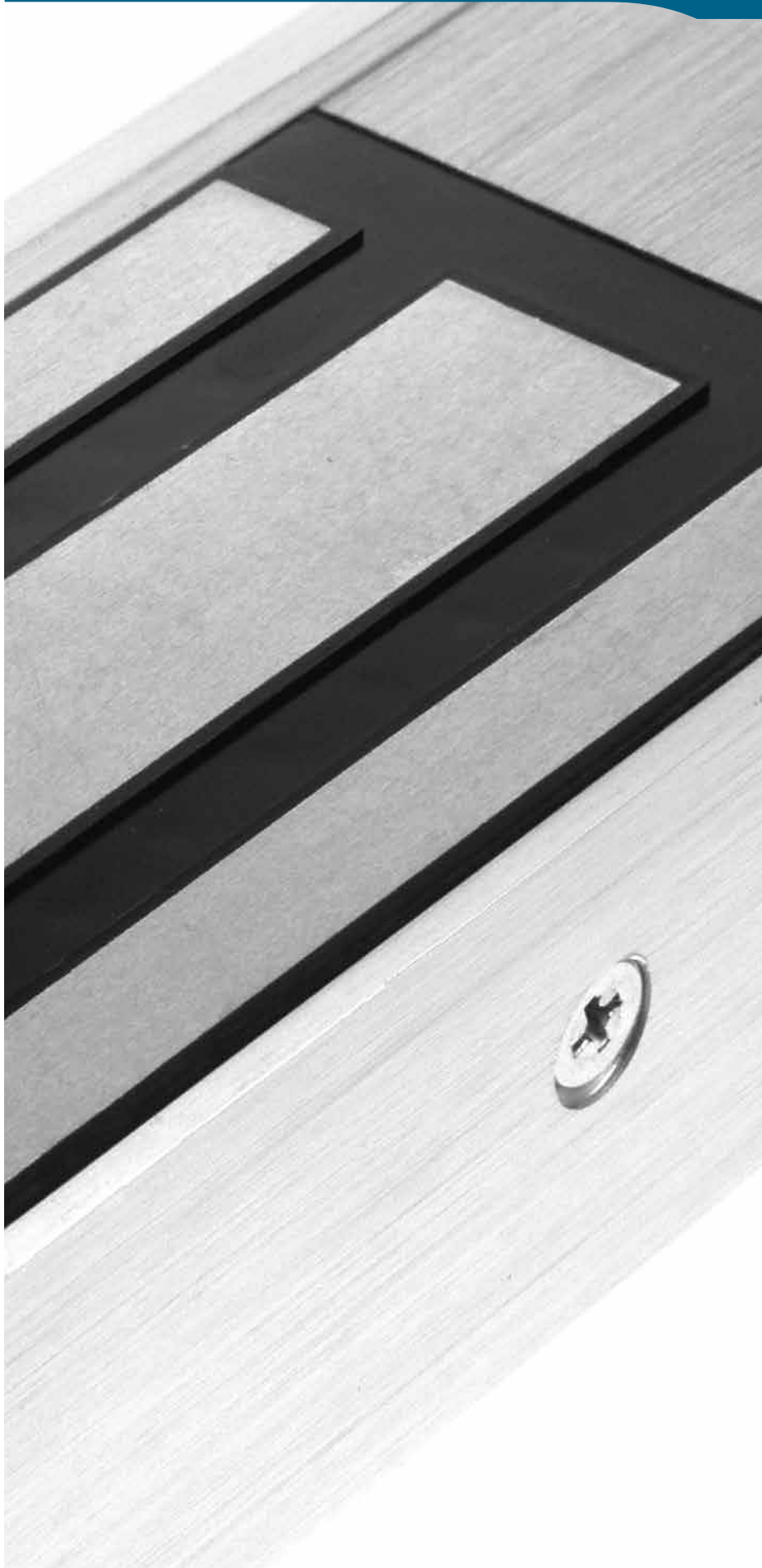


# M Series Magnetic Locks



## Magnetic Lock

The magnetic lock or maglock is an electric locking device that consists of an electromagnet and an armature plate. By attaching the electromagnet to the door frame and the armature plate to the door, voltage passing through the electromagnet attracts the armature plate holding the door shut.

Entryphone® stocks two sizes of maglocks, the standard unit which has a holding strength of 1200lbs and a mini version with a holding strength of 600lbs.

Unlike an electric release a magnetic lock has no mechanical interconnecting parts and is therefore very durable which makes it valuable in a high-traffic environment. However, because the maglock has no means of being operated mechanically, electronic authentication is necessary (eg coded access, proximity access control, press to exit switch etc).

A maglock is a fail-open device (i.e. it needs power to remain locked) which, for fire safety is an important feature. If a maglock is fitted on an escape or fire route a "break-glass" unit should be fitted in addition to any egress button.



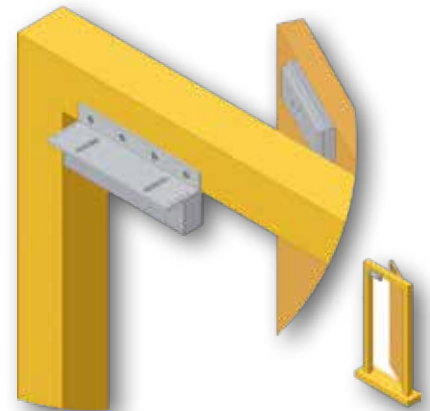
Part No.	Description
ML1200	Standard Magnet 1200lbs H74mm W265mm D40mm
MML600	Mini Magnet 600lbs H47mm W256mm D26mm

**Fitting**

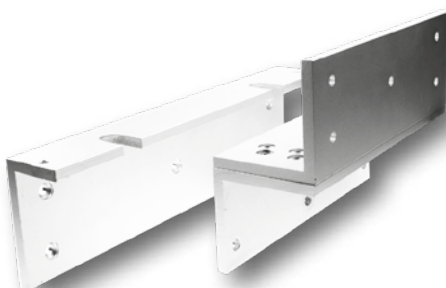
A maglock is usually fitted at the top of a door with the magnet fixed to the frame and the armature fitted to the door. Different fixing plates are required depending on which way the door opens and the thickness of the door frame.



MLAH	Magnetic lock armature housing
MMLAH	Mini-Magnetic lock armature housing
	recommended for an outward opening door



MLLP	Magnetic lock L Plate
MMLLP	Mini-Magnetic lock L Plate
	required for an outward opening door with a narrow door frame



MLLZP	Magnetic lock LZ plates
MMLLZP	Mini-Magnetic lock LZ plates
	required for an inward opening door