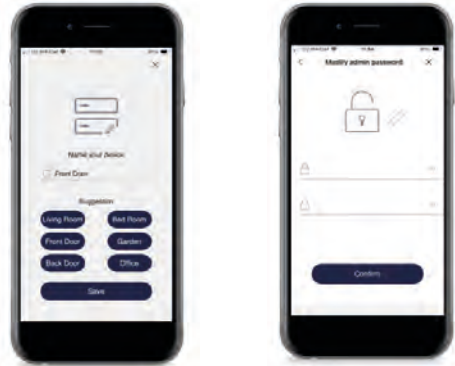
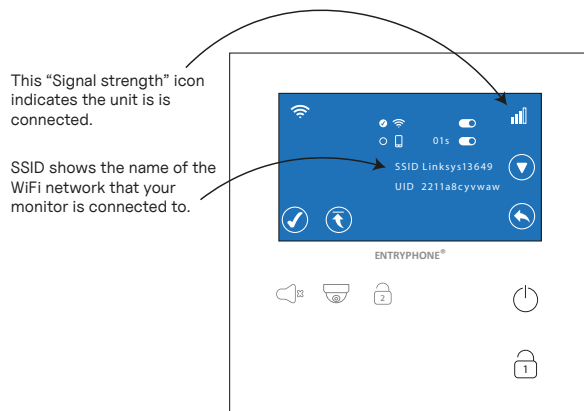


#### 4. Name your device and add a password



#### 5. Check your monitor is connected

When your smartphone has successfully paired your monitor to your WiFi, the monitor display will show the signal strength in the top right-hand corner and display the name of the WiFi network it is on



#### 6. Sharing

After pairing your monitor with the Entryphone Connect App, you can extend access to other users, enabling them to receive calls on their smart-phones whenever the monitor is called. **Firstly, they must download the Entryphone Connect App and create their own account.**

To invite someone to share access, launch your app and **tap the '...' icon located at the top right of the door you want to share.** Then, select 'share' and input the email associated with their registered account. Hit the search icon.

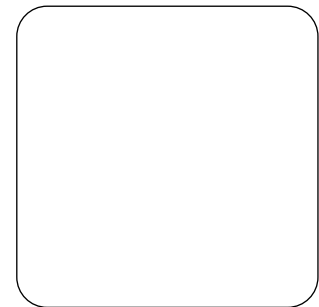
If their account is verified, it will appear on your screen. You can then tap the 'share' icon to send them an invitation.

Initially, the request will display as pending. Once they accept the invitation in their app, it will appear as an item in your 'Share to' list within the 'Me' menu of your app. **To revoke access, you can simply remove them from that list.**

**Please note that only the primary account holder of a device can share access.**

# QVT1W WiFi link

## Instructions



**The Entryphone Co. Ltd**

23 Granville Road London SW18 5SD  
020 8870 8635    entryphone.co.uk

**entryphone®** 

## 1. Install and register the App

To download the Entryphone Connect app to your smartphone scan the QR codes below or search for "Entryphone Connect" on the App Store or the Google Play Store.



iOS

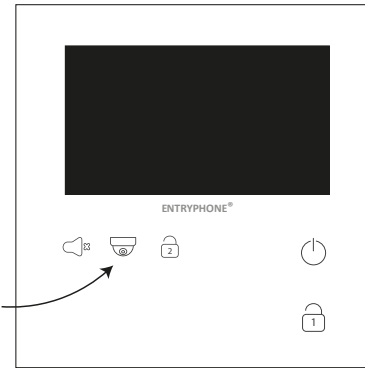


Android

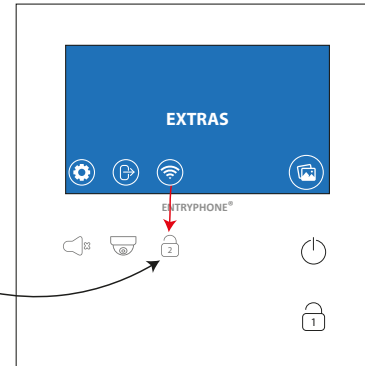
When the app is first installed you will be presented with the "Account login", screen, press the person icon and you will be invited to login to an existing account or to register for a new account. Please follow the on-screen instructions .

For new account registrations, provide a valid email address that isn't already associated with another account. This email will be used for your account verification and future logins. Your chosen password needs to be 6 or more characters containing both numbers and letters.

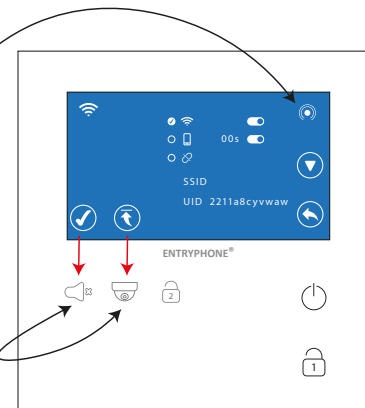
## 2. Enable WiFi pairing on your monitor



To enter "EXTRAS" mode, press and hold the camera symbol for 3 seconds.



WiFi



This "signal" icon indicates the unit is in pairing mode.

If the "signal" icon is not present, press this re-set button followed by the tick. A reset will "forget" any existing WiFi connection.

## 3. Pair your smart-phone to your WiFi monitor

Ensure that your smart-phone is connected to the same WiFi network as the monitor you intend to pair it with and that your WiFi connection operates on the 2.4GHz frequency. Have your WiFi password handy.

Open the Connect App and press the plus symbol on the screen and grant permission to access your phone's camera.



Scan the QR code. This can be found on the front page of this guide, on the packaging or on the rear of the monitor itself. Once the QR code is scanned, after a few seconds the app will display a message "reset success - next" press this to continue.

The app will display the name of your WiFi network (SSID) and ask you to enter your password. Press next and the pairing process will start. Ensure the volume on your smart phone is up. You will hear a series of tones emitting from your phone. Hold your phone close to your monitor, after several seconds the tones will stop and your monitor will bind to your WiFi.

