

PTS Video Press-to-Speak				
Product	Description	Material	Colour	Models available
Video PTS	Push-to-Speak Colour Monitor	ABS	BT White	201PTS 1 button 202PTS 2 button version 202PTSS 1 button with 2 LED's and cut-out switch

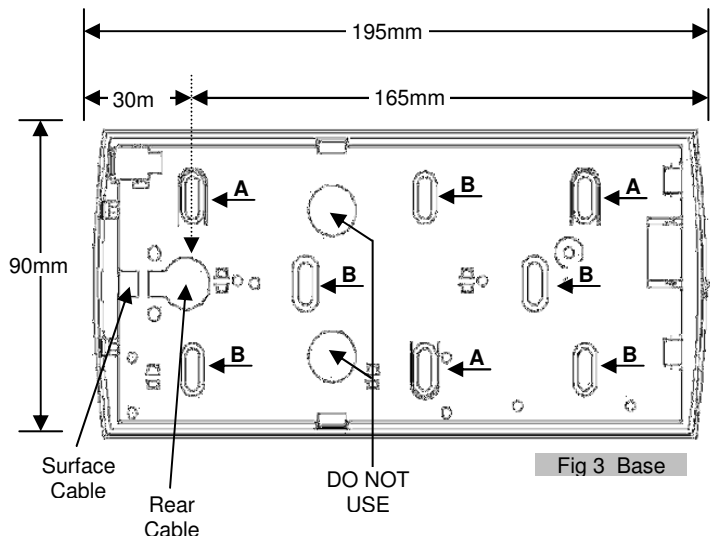
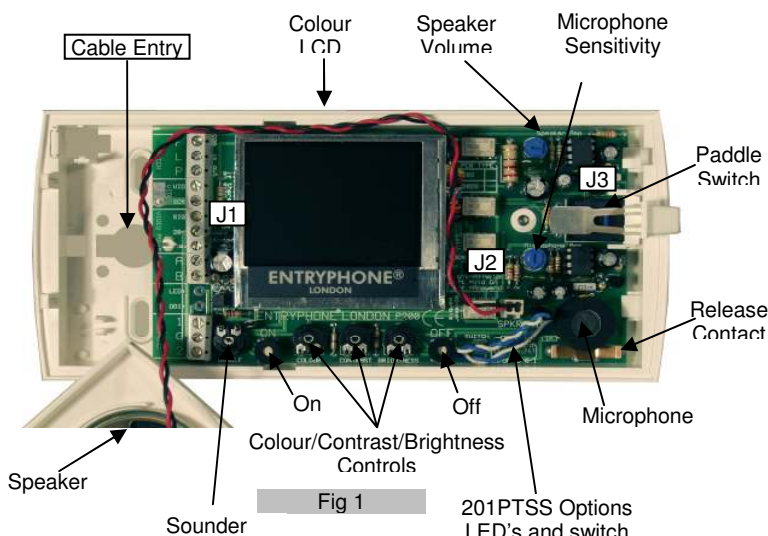


Table A

Connections		
Speech	F	Speech common
	L	Speech from the door
	P	Speech to the door
Video	VID	Video signal
	SCR	Video screen
Video Power	SIG	Signal
	20-	'-' 20V DC
	20+	'+' 20V DC
Sounder	A	Sounder
	B	Sounder
Options	LED+	Red LED*
	DOI+	Green LED*
Buttons	1	Button #1
	G	Buttons common
	2	Button #2

\* only on 201SS

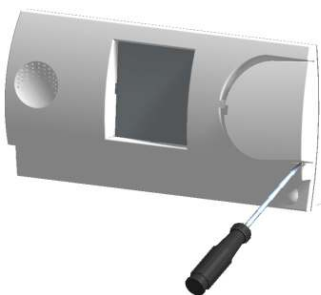


Fig 2 Cover

Table B

	Label	Jumper in	Jumper Out
J1	Auto On	Monitor will turn on when called	Monitor will not turn on when called
J2	Lock Button	<b>Left pair</b> Release only active when monitor is called	Lock only active following a conversation
		<b>Right pair</b> Release button always active	
J3	PTS start	Monitor will turn on when paddle pressed	No local on facility

**Fitting Instructions**

- Ideally, wiring should enter the PTS from the rear as per Fig 3 but can also be wired surface as shown. The cable should be at a height of 1.4m (700mm for a disabled user) from floor level.
- Unpack the unit and remove the large button paddle by prizing it off with a small flat headed screw driver inserted between the button and the case at the lower right hand side (fig2). This will reveal the screw securing the cover.
- Loosen the cover screw and lift the cover carefully from its base.
- Unplug the speaker lead from the PCB
- Remove the PCB from the base by lifting from the left end
- Using the base as a template, choose suitable fixing positions using some of the eight possible oblong fixing holes, though we recommend the holes marked 'A' where the wall is not completely flat and smooth. Drill and plug the wall appropriately.
- **IMPORTANT** Please use the fixing screws provided or alternatively use countersunk screws with a maximum head size of 8mm diameter. The head must not protrude above the base by more than 2mm or this will interfere with the printed circuit board and cause a short and possible damage.
- Replace the PCB ensuring it is firmly in place and retained properly by the clips on the base. Make sure the plastic button switch actuator is in place.
- Make the connections as indicated on the wiring diagram.
- Set the options required as per table A
- Reconnect the speaker wires and replace the cover. Engage the clips at the left end and secure it with the screw. Ensure the cover is properly seated and all the wires are within the casing.
- Re-fit the large paddle button by positioning the upper clip in place and snapping the lower hinge part in place.
- Check the operation of the paddle switch by depressing it and making sure that you can hear the microswitch click twice. If not, re-check that both the cover and the PCB are correctly located. If the switch is still not activating correctly it is likely that the baseplate is distorted because it has been mounted on a distorted surface.
- To operate – press paddle to speak to caller, release to listen. Press small button on lower right hand side to admit callers. Monitor will automatically turn off after a preset time (20 seconds to 2 minutes, adjustable). If option is selected, to turn monitor on manually, press paddle switch once.